

Value of Enhancer of Zeste Homolog 2 (EZH2) for Determining Prognosis in Colon Cancer

NASSRIN GHOLAMI¹, ZOHREH SANAAAT², ROYA DOLATKHAH³, ALIREZA NIKANFAR⁴, ALI ESFAHANI⁵, AMIN DANANDEHMEHR⁶, ASHRAF AKHRJOU⁷, FARIS FARASSATI⁸



ABSTRACT

Introduction: It has been reported that Enhancer of Zeste Homolog 2 (EZH2) enhancer is expressed in Colorectal Cancer (CRC), but there are only limited findings of its overexpression with prognosis in CRC.

Aim: To investigate the association between EZH2 expression and clinicopathologic variables and outcome in CRC.

Materials and Methods: This retrospective study retrieved the archived histological samples for immunohistochemistry evaluation of EZH2 and PCR analysis of KRAS from patients with CRC who were followed-up between April 2009 and February 2019. Kaplan-Meier methods were used for Overall Survival (OS) and Disease-Free Survival (DFS). Cox proportional hazard model and time dependent Cox model were used to evaluating association of clinicopathologic factors with OS and DFS.

Results: Hundred patients with CRC were included with mean age and range 57.39±13.52 years and 21-83 years. There were

no significant association between OS (log-rank p-value=0.50) and DFS (log-rank p-value=0.74) with EZH2 expression. Third quartile of OS was 30.7 days and for DFS was 107.83 days.

According to the result of multivariate cox regression after adjusting for confounding variables, there was no significant association between EZH2 and OS (HR=1.53, 95% CI=0.63-3.72, p=0.35). Also, a borderline association was observed between EZH2 and DFS (HR=11.08, 95% CI=1.02-119.72, p=0.05). There were no significant associations between the DFS, OS and other clinicopathologic parameters except for the stage, respectively (HR=3.51, 95% CI=1.71-7.20, p=0.001) (HR=3.55, 95% CI=1.71-7.35, p=0.001).

Conclusion: The expression of EZH2 in patients with CRC was not associated with clinical features, and does not appear to be associated with OS or DFS. EZH2 is an attractive target in cancer and much more research is clearly warranted.

Keywords: Colorectal neoplasms, Disease-free, Immunolabeling technique, Survival

INTRODUCTION

Cancer is a major cause of death, for which early diagnosis and treatment remain the best strategy to improve prognosis and quality of life [1,2]. Improving understanding of the molecular mechanisms that underlie the malignant transformation of cancer cells may lead to the development of new therapeutic strategies to fight cancer [3]. Worldwide, 1.2 million new cases of CRC occur annually, accounting for about 10% of all cancers, with a mortality rate of approximately 600,000 [4]. The latest WHO findings cited in GLOBOCAN, is estimated that about 10,96,000 new cases of colorectal cancer will be diagnosed in 2018, while the expected number was 7,04,000. In total, these include 1.8 million new CRC cases [5].

After chemotherapy, more than 50% of patients with CRC relapse, typically with metastasis and 5-year survival of only 10% [6]. In recent years, the pathways for controlling apoptosis, cell proliferation, tumour progression and differentiation, as well as the pathogenic mechanisms of associated processes, have been evaluated to identify the prognostic factors in CRC [7]. Though they are less well understood, epigenetic mechanisms may be as significant as mutations [8]. To date, however, the only reliable prognostic markers in CRC are mutations in BRAF and the RAS family [9,10]. Therefore; clinicians need a better understanding of the biology of CRC and to identify new therapeutic goals [11].

Despite a growing knowledge base, data on the role of EZH2 in CRC are scanty and inconclusive [6] EZH2 is known to be a catalytic unit of the epigenetic regulator of Polycomb Repressive Complex 2 (PRC2) on chromosome 7q35 [12], which affects SUZ12 polycomb repressive complex 2 subunits and the development of embryonic ectoderm necessary for trimethylating histone 3 lysine residue 27 [13,14]. Recent studies have shown that over-expression or mutation of EZH2 occurs in several malignancies [15,16], where it is associated

with cell proliferation, invasion, apoptosis, angiogenesis, metastasis, stem cell maintenance, drug resistance, and disease progression; thus, EZH2 is an attractive anti-cancer target [17-20]. Although it has been consistently reported that EZH2 is expressed in CRC, it is unclear whether this expression is positively [21], negatively [22,23], or not associated with patient survival [24]. Also, only one study has considered the role of EZH2 in the growth of CRC cells [24].

This study aimed to study the clinicopathologic significance of EZH2 expression in CRC, the association between EZH2 expression and important clinical variables, and the DFS and OS.

MATERIALS AND METHODS

This was a retrospective study of primary surgical procedures for CRC performed at Tabriz University of Medical Sciences, Tabriz, Iran, from April 2009 to June 2019. In this study, all participants gave informed consent for the participation in the study and using their Formalin-Fixed Paraffin-Embedded (FFPE) tissue samples. The ethics committee of Tabriz University of Medical Sciences approved the study protocol (permit no 5/d/86136). All patients suspected of colorectal cancer were undergoing colonoscopy. After histological confirmation of colorectal cancer, they were undergoing surgical procedures. All patients in Stage II and III with colorectal cancer treated with FOLFOX 4 or XELOX protocol, as the routine of oncology ward. Also, patients with rectal cancer underwent radiotherapy. Patients with Stage IV diseases checked for KRAS mutations, and in cases with wild type K-RAS, they received anti-EGFR target therapies and chemotherapy too.

Follow-up of the Patients

In non-metastatic colorectal cancer, patients followed every three months for three years, every six months for five years, and then annually. Also, colonoscopy performed for them every three years.

In metastatic patients, treatment was continued until the disease progresses, or if the side-effects of the drug were seen. The survival analysis in association of different treatment methods was out of aims of the present study. The OS and DFS were the outcomes of interest. OS was defined as the time from history of surgery to death from CRC, and DFS was defined as the time to recurrence or the last follow-up date.

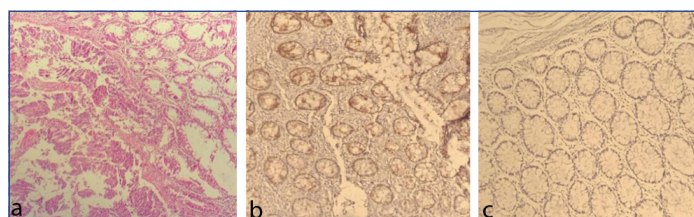
IHC Analysis

All cases were retrieved the archived (FFPE) tissue samples (stained with haematoxylin and eosin) and tested them to confirm the pathological diagnosis and grade based on the 2017 World Health Organisation classification of CRC. Tumour size, nodal involvement, metastasis was estimated by (TNM) staging according to the seventh edition of the American Joint Committee on Cancer [25].

Sections for IHC analysis were deparaffinised through graded alcohols and xylene, placed in an EDTA buffer solution (pH 9.0) and then heated to 100°C in a microwave oven at 900 W for 2-5 minutes and 180 W for 5 minutes until boiling. Then, the slides were left in the solution to cool down at room temperature for ~15 minutes and were rinsed in tris-buffered saline (pH=7.6) for 5 minutes. Endogenous peroxidase with 3% hydrogen peroxidase in methanol was added for 10 minutes to block non-specific binding, and then the slides were incubated with the primary antibodies overnight in 4°C. The following primary antibodies were used: EZH2 (AV38470 100 UG; QC: 10904; Sigma) 1.15 diluted phosphate-buffered saline solution. After the slides were incubated in secondary antibody for 30 minutes again incubated in Tris buffer for 5 minutes and incubated with chromogen for 5 minutes. Finally, the slides were washed in Tris buffer saline, prior to sealing a coverslip, counterstained with haematoxylin, and dehydrated with alcohols (96% and 100%) and xylene [2].

EZH2 immunostaining score was incorporated both staining intensity (0=Negative, 1=Weak, 2=Intermediate, 3=Intensive) and percentage of positive cells (0=0%, 1=>0 <-1%, 2=1-10%, 3=11-33%, 4=34-66%, 5=>67%). The total score of the intensity and the proportion were expressed as the final score. Patients with (range 0-4) expression were combined as the lower expression group, and patients with (range 5) expression were combined as the higher expression group for analyses [Table/Fig-1a-c] [26].

Paraffin blocks of patients with colorectal cancer were used to evaluate the mutation of KRAS. It was cut to 5 µm for PCR by the Idylla Biocartis NV system (2800 Mechelen, Belgium, BCT006631), in the reference molecular lab, for codons 12, 13, 59, 61, 117, and 146.



[Table/Fig-1]: Immunohistochemical analysis of EZH2 in colorectal cancer (100X). (a) Haematoxylin and eosin stain; (b) high expression; and (c) low expression.

STATISTICAL ANALYSIS

The association between EZH2 level (low and high level of EZH2) and clinicopathologic parameters was evaluated by Chi-square test. The Kaplan-Meier method was used to evaluate survival rates and log rank test was used to compare survival of patients with low and high level of EZH2. The uni- and multi-variate Cox proportional hazard regression analysis was performed to evaluate association of EZH2 with OS and PFS, unadjusted and adjusted for confounding variables (Age, Sex, Grade, Stage, EZH2 expression), respectively. The proportional hazards assumption for Cox regression was evaluated based on Schönfeld residuals. To determine the predictive power of EZH2 at the Survival Rate, the Harrell's C-index was calculated. The p-value <0.05 was considered significant. All statistical analyses were performed in STATA, version 14.

RESULTS

Patients and specimens: Enrolled 100 colorectal cancer patients with mean age of 57.60±13.68 years (range of 21-83 years).

Association of EZH2 expression with clinicopathological aspects: The high EZH2 was expression in 86 (86%) of the patients and Low expression in 14 (14%). There was no association between EZH2 expression and clinicopathologic parameters Also, there was no significant association observed between EZH2 and KRAS, (p=0.92) [Table/Fig-2].

Variables	Total	EZH2 Low (%)	High (%)	p-value	
Age	<50	32	6 (18.8)	26 (81.3)	0.36
	≥50	68	8 (11.8)	60 (88.2)	
Sex	Female	41	6 (14.6)	35 (85.4)	0.80
	Male	59	8 (13.6)	51 (86.4)	
Site	Ascending	22	3 (13.6)	19 (86.4)	0.70
	Transverse	4	0 (0)	4 (100)	
	Descending and rectum	74	11 (14.9)	63 (85.1)	
Grade	I	63	7 (11.1)	56 (88.9)	0.41
	II	34	6 (17.6)	28 (82.4)	
	III	3	1 (33.3)	2 (66.7)	
T	I	1	0 (0)	1 (100)	0.90
	II	22	4 (18.2)	18 (81.8)	
	III	44	6 (13.6)	38 (86.4)	
	IV	33	4 (12.1)	29 (87.9)	
N	Positive	51	8 (15.7)	43 (84.3)	0.62
	Negative	49	6 (12.2)	43 (87.8)	
M	Positive	3	3 (13.6)	13 (86.4)	0.95
	Negative	11	11 (14.1)	67 (85.9)	
Stage	I, II	41	6 (14.6)	35 (85.4)	0.87
	III, IV	59	8 (13.6)	51 (86.4)	
KRAS	Wild	7	1 (14.3)	6 (85.7)	0.92
	Mutant	5	1 (20)	4 (80)	
	Unknown	87	12 (13.8)	75 (86.2)	
DFS	Without relapse	54	7 (13)	47 (87)	0.74
	Relapse	46	7 (15.2)	39 (84.8)	
OS	Alive	56	8 (14.3)	48 (85.7)	0.92
	Death	44	6 (13.6)	38 (86.4)	

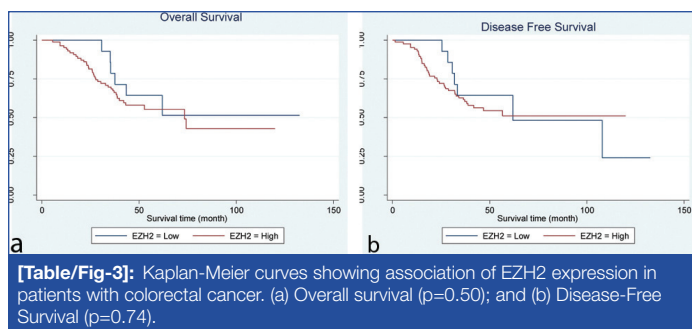
[Table/Fig-2]: Clinicopathologic characteristics of patients with colon cancer according to the EZH2 level.

DFS: Disease free survival; OS: Overall survival; EZH2: Enhancer of zeste homolog 2

Survival analysis by expression of EZH2: The patients who died by the end of the follow-up were 44%. The third quartile of the overall survival distribution (the latest time that at least 75 % of the patients were still alive) was 30.7 days and second quartile (median) of survival time was 73.367 days. Because of low rate of event, the survival curve does not drop to 0.25 or below. So, the first quartile could not be computed. The mean survival time was 80.55 days. There were no significant association between OS and high or low EZH2 expression (log-rank p=0.50; [Table/Fig-3a]).

The third quartile of the survival time for DFS (the latest time that at least 75 % of the patients were still alive without any recurrence) was 25.37 days and median time to relapse was 107.83 days. Because of low rate of event, the survival curve does not drop to 0.25 or below. So, the first quartile could not be computed. The mean survival time was 77.81 days. There were no significant association between DFS and high or low EZH2 expression (log-rank p=0.74; [Table/Fig-3b]).

Association between patient outcome and EZH2 IHC expression: The proportion hazard assumption was satisfied for OS (p-value=0.19). The Univariate proportional hazard Cox regression



analysis showed that OS was no association with EZH2 expression (HR=1.34, 95% CI=0.57-3.19, p=0.50). Proportional hazard Cox-regression analysis after adjustment for other clinicopathologic parameters showed that OS was not significantly associated with EZH2 (HR=1.53, 95% CI=0.63-3.72, p=0.35). Harrell's-C index for OS was 0.52.

The proportion hazard assumption was not satisfied with DFS (p-value=0.009). This indicates that the risk ratio of outcome in the two EZH2 groups varied significantly over time. Due to the lack of proportionality assumption, the Cox model with time dependent covariate was processed to the data instead of the conventional Cox model. The time-dependent variable was defined as the interaction between time and the EZH2 variable. After entering the time-dependent variable into the model, the proportionality assumption was established (p-value=0.71). The result of the time dependent Cox model did not show significant effect for the EZH2 variable (HR=7.88 95% CI= .79-78.13, p=.07). In multivariate Cox model for DFS with time dependent variable and adjustment for confounders, the risk level for high EZH2 group was 11.08 times higher than the low EZH2 group (HR=11.08, 95% CI=1.02-119.72, p=0.05).

There were no significant associations between the DFS, OS and other clinicopathologic parameters except for the stage, respectively (HR=3.51, 95% CI=1.71-7.20, p=0.001) (HR=3.29, 95% CI=1.59-6.79, p=0.001) [Table/Fig-4].

Variables	DFS HR (95% CI)	p-value*	OSHR (95% CI)	p-value**
Age	<50	Ref	Ref	
	≥50	1.21 (0.60-2.49)	1.42 (0.70-2.93)	0.33
Sex	Female	Ref	Ref	
	Male	0.70 (0.40-1.30)	0.82 (0.44-1.50)	0.51
Grade	I	Ref	Ref	
	II	0.98 (0.51-1.87)	1.17 (0.61-2.25)	0.62
	III	3.85 (0.73-20.12)	3.24 (0.64-16.30)	0.15
Stage	I, II	Ref	Ref	
	III, IV	3.55 (1.71-7.35)	3.30 (1.60-6.80)	0.001
EZH2	Low	Ref	Ref	
	High	11.08 (1.02-119.72)	1.53 (0.63-3.72)	0.34

Table/Fig-4: Hazard ratios of EZH2 for DFS and OS adjusted for Clinicopathologic characteristics of patients with colon cancer (Multivariate Cox Proportional-Hazards Regression model).

Lower: Lower bound for 95%; CI: Upper, upper bound for 95%; CI: Adjusted variables: Age, Sex, Grade, Stage

*p-value from time dependent cox regression; **p-value from proportion hazard cox regression

EZH2: Enhancer of zeste homolog 2; DFS: Disease free survival; OS: Overall survival

DISCUSSION

CRC was the third most common cancer in the world in 2013 according to Global Burden of Cancer report [27]. Moreover, the worldwide incidence increased from 1.2 million to 1.7 million cases between 2005 and 2015, representing an overall increase of 36.5% [28,29]. When adjusting for population ageing and growth, even between comparable populations, cases of CRC increased by 5% in Iran over that period, such that it is now the fifth most common cancer [27]. EZH2 is epigenetic regulator of Polycomb Repressive Complex 2 (PRC2) on chromosome 7q35 [12], which necessary for

trimethylating histone 3 lysine residue 27 [13,14]. Recent studies have shown that over-expression or mutation of EZH2 occurs in several malignancies [15,16]. EZH2 plays an important role in the proliferation, invasion, apoptosis, angiogenesis, metastasis, drug resistance, and progression of cancer [2,18,19]. This Oncogene is important to cancer growth through epigenetic silencing of tumour suppressor gene expression [30]. It is known to be over-expressed in prostate cancer [31], lung cancer [32], breast cancer [33], liver cancer [34], and CRC [6] and has a demonstrable association with invasive clinical manifestations [7]. Although incompletely understood, abnormalities of EZH2 and its underlying mechanisms appear to be involved in the pathogenesis of CRC, with a significantly increased expression reported [35].

In this study, the present authors evaluated EZH2 expression in 100 samples of CRC, identifying that EZH2 expression was high in 86 patients and low in only 14 patients. There was no association between EZH2 expression and clinicopathologic parameters. Boostani F et al., reported that high EZH2 expression was associated with clinicopathological features in breast cancer [2]. The present authors could not find any association between any clinicopathological factors and EZH2 expression in CRC. Jiang T et al., reported that high EZH2 expression could be a prognostic factor for both OS and DFS in lung cancer [14]. The present authors also evaluated the association of EZH2 expression with OS and DFS in CRC. EZH2 over-expression was not associated with OS (HR=1.53, 95% CI=0.63-3.72, p=0.35). In association of EZH2 expression with DFS (HR=0.93, 95% CI=0.90-0.10, p=0.05), but considering to the wide confidence interval, this risk ratio needs further investigation.

As has been shown, KRAS is one of the factors indicating prognosis in patients with CRC. Because only 12 tests were available in metastatic patients, survival analysis did not seem statistically significant, so survival analysis was not performed.

In a meta-analysis of studies in Asia, Chen S et al., noticed that EZH2 over-expression was significantly associated with stage and lymph node metastasis, but not with T status [17]. They concluded that it was not possible to confirm the presence of a definite relationship between EZH2 expression and specific carcinoma types because there were too few studies available for anyone type of cancer. In the present study authors didn't find significant associations between the DFS, OS and clinicopathologic parameters except for the stage, respectively (HR=3.51, 95% CI=1.71-7.20, p=0.001) (HR=3.55, 95% CI=1.71-7.35, p=0.001). Given that Iran is in Asia, conducting further studies with more samples in this population could improve our knowledge of the effect of EZH2 on CRC.

Limitation(s)

There are some limitations that need to be considered with this research. There was a small sample size which could lead to possibility of superiority bias. The study used a shorter follow-up period to analyse survival (which will have made it difficult to assess the effect of EZH2 on disease progression and mortality). The data interpretation was hindered by the lack of an established gold standard for expressing the EZH2 score, which was performed at home in this study. Previous researchers have used different EZH2 ranking methods, so it is possible that this difference in approach accounted for the lack of comparability between data sets. KRAS test were not available for most of the metastatic patients. Despite these limitations, the present study benefits from having evaluated a series of CRCs from a single institute.

CONCLUSION(S)

In patients with CRC, it was found that EZH2 expression was not associated with clinical features and that it does not appear to be associated with OS or DFS. EZH2 is an attractive target for cancer treatment, but much more research is clearly warranted. Specifically, there is a need to resolve issues with the scoring method and the

cut-off threshold for a high EZH2 expression before clinical studies can progress further.

Acknowledgement

This study was conducted as part of a fellowship thesis for Dr. Gholami (thesis no 94/5-12/38). The present authors would like to thank Dr. Robert Sykes (www.doctored.org.uk) for providing editorial services in the final drafts of the manuscript. The authors also like to thank the Hematology and Oncology Research Center for supporting this research study (Grant no 95/13).

Declaration: This study was presented in ESMO Asia 2018 Congress.

REFERENCES

- [1] Chokunonga E, Borok MZ, Chirenje ZM, Nyakabau AM, Parkin DM. Trends in the incidence of cancer in the black population of Harare, Zimbabwe 1991-2010. *Int J Cancer*. 2013;133(3):721-29.
- [2] Boostani F, Dolatkah R, Fakhriou A, Farassati F, Sanaat Z. Association of clinicopathologic characteristics and outcomes with EZH2 expression in patients with breast cancer in East Azerbaijan, Iran. *OncoTargets and Therapy*. 2018;11:449-57.
- [3] Wassef M, Michaud A, Margueron R. Association between EZH2 expression, silencing of tumour suppressors and disease outcome in solid tumours. *Cell Cycle*. 2016;15(17):2256-62.
- [4] Jemal A, Center MM, DeSantis C, Ward EM. Global patterns of cancer incidence and mortality rates and trends. *Cancer Epidemiol Biomarkers Prev*. 2010;19(8):1893-907.
- [5] Bray F, Ferlay J, Soerjomataram I, Siegel RL, Torre LA, Jemal A. Global cancer statistics 2018: GLOBOCAN estimates of incidence and mortality worldwide for 36 cancers in 185 countries. *CA Cancer J Clin*. 2018;68:394-424.
- [6] Fussbroich B, Wagener N, Macher-Goepfing S, Benner A, Falth M, Sultmann H, et al. EZH2 depletion blocks the proliferation of colon cancer cells. *PLoS One*. 2011;6(7):e21651.
- [7] Weber TK, Chin HM, Rodriguez-Bigas M, Keitz B, Gilligan R, O'Malley L, et al. Novel hMLH1 and hMSH2 germline mutations in African Americans with colorectal cancer. *JAMA*. 1999;281(24):2316-20.
- [8] Goelz SE, Vogelstein B, Hamilton SR, Feinberg AP. Hypomethylation of DNA from benign and malignant human colon neoplasms. *Science*. 1985;228(4696):187-90.
- [9] Douillard JY, Oliner KS, Siena S, Tabernero J, Burkes R, Barugel M, et al. Panitumumab-FOLFOX4 treatment and RAS mutations in colorectal cancer. *N Engl J Med*. 2013;369(11):1023-34.
- [10] Souglakos J, Philips J, Wang R, Marwah S, Silver M, Tzardi M, et al. Prognostic and predictive value of common mutations for treatment response and survival in patients with metastatic colorectal cancer. *Br J Cancer*. 2009;101(3):465-72.
- [11] Fornaro L, Faviana P, De Gregorio V, Vivaldi C, Paolicchi E, Masi G, et al. Molecular and pathological characterization of the EZH2 rs3757441 single nucleotide polymorphism in colorectal cancer. *BMC Cancer*. 2015;15:874.
- [12] Noordhuis MG, Eijssink JJ, Roossink F, de Graeff P, Pras E, Schuurung E, et al. Prognostic cell biological markers in cervical cancer patients primarily treated with (chemo)radiation: A systematic review. *Int J Radiat Oncol Biol Phys*. 2011;79(2):325-34.
- [13] Choi HJ, Jang S, Ryu JE, Lee HJ, Lee HB, Ahn WS, et al. Significance of EZH2 expression in canine mammary tumours. *BMC Vet Res*. 2016;12(1):164.
- [14] Jiang T, Wang Y, Zhou F, Gao G, Ren S, Zhou C. Prognostic value of high EZH2 expression in patients with different types of cancer: A systematic review with meta-analysis. *Oncotarget*. 2016;7(4):4584-97.
- [15] Simon JA, Lange CA. Roles of the EZH2 histone methyltransferase in cancer epigenetics. *Mutat Res*. 2008;647(1-2):21-29.
- [16] Cao Q, Mani RS, Ateeq B, Dhanasekaran SM, Asangani IA, Prensner JR, et al. Coordinated regulation of polycomb group complexes through micro RNAs in cancer. *Cancer Cell*. 2011;20(2):187-99.
- [17] Chen S, Huang L, Sun K, Wu D, Li M, Li M, et al. Enhancer of zeste homolog 2 as an independent prognostic marker for cancer: a meta-analysis. *PLoS One*. 2015;10(5):e0125480.
- [18] Beca F, Kensler K, Glass B, Schnitt SJ, Tamimi RM, Beck AH. EZH2 protein expression in normal breast epithelium and risk of breast cancer: Results from the Nurses' Health Studies. *Breast Cancer Res*. 2017;19(1):21.
- [19] Shen L, Cui J, Liang S, Pang Y, Liu P. Update of research on the role of EZH2 in cancer progression. *Onco Targets Ther*. 2013;6:321-24.
- [20] Tan JZ, Yan Y, Wang XX, Jiang Y, Xu HE. EZH2: Biology, disease, and structure-based drug discovery. *Acta Pharmacol Sin*. 2014;35(2):161-74.
- [21] Fluge O, Gravdal K, Carlsen E, Vonon B, Kjellevedt K, Refsum S, et al. Expression of EZH2 and Ki-67 in colorectal cancer and associations with treatment response and prognosis. *Br J Cancer*. 2009;101(8):1282-89.
- [22] Mimori K, Ogawa K, Okamoto M, Sudo T, Inoue H, Mori M. Clinical significance of enhancer of zeste homolog 2 expression in colorectal cancer cases. *Eur J Surg Oncol*. 2005;31(4):376-80.
- [23] Wang CG, Ye YJ, Yuan J, Liu FF, Zhang H, Wang S. EZH2 and STAT6 expression profiles are correlated with colorectal cancer stage and prognosis. *World J Gastroenterol*. 2010;16(19):2421-27.
- [24] Kodach LL, Jacobs RJ, Heijmans J, van Noesel CJ, Langers AM, Verspaget HW, et al. The role of EZH2 and DNA methylation in the silencing of the tumour suppressor RUNX3 in colorectal cancer. *Carcinogenesis*. 2010;31(9):1567-75.
- [25] Amin M, Edge S, Greene F, et al., eds. *AJCC Cancer Staging Manual*. 8th ed. CA Cancer J Clin. 2017;67(2):93-99. doi: 10.3322/caac.21388. Epub. 2017 Jan 17.
- [26] Cao J. Breast cancer. *Method in Molecular Biology*. 2016;12-13.
- [27] Global Burden of Disease Cancer Collaboration, Fitzmaurice C, Dicker D, Pain A2, Hamavid H, Moradi-Lakeh M, et al. The Global Burden of Cancer 2013. *JAMA Oncol*. 2015;1(4):505-27.
- [28] Global Burden of Disease Cancer C, Fitzmaurice C, Allen C, Barber RM, Barregard L, Bhutta ZA, et al. Global, regional, and national cancer incidence, mortality, years of life lost, years lived with disability, and disability-adjusted life-years for 32 Cancer Groups, 1990 to 2015: A systematic analysis for the global burden of disease study. *JAMA Oncol*. 2017;3(4):524-48.
- [29] Bray F, Soerjomataram I. The Changing Global Burden of Cancer: Transitions in Human Development and Implications for Cancer Prevention and Control. In: Gelband H, Jha P, Sankaranarayanan R, Horton S, eds. *Cancer: Disease Control Priorities, Third Edition (Volume 3)*. Washington (DC) 2015.
- [30] Shin YJ, Kim JH. The role of EZH2 in the regulation of the activity of matrix metalloproteinases in prostate cancer cells. *PLoS One*. 2012;7(1):e30393.
- [31] van Leenders GJ, Dukers D, Hessels D, van den Kieboom SW, Hulsbergen CA, Witjes JA, et al. Polycomb-group oncogenes EZH2, BMI1, and RING1 are overexpressed in prostate cancer with adverse pathologic and clinical features. *Eur Urol*. 2007;52(2):455-63.
- [32] Kikuchi J, Kinoshita I, Shimizu Y, Kikuchi E, Konishi J, Oizumi S, et al. Distinctive expression of the polycomb group proteins Bmi1 polycomb ring finger oncogene and enhancer of zeste homolog 2 in nonsmall cell lung cancers and their clinical and clinicopathologic significance. *Cancer*. 2010;116(12):3015-24.
- [33] Kunju LP, Cookingham C, Toy KA, Chen W, Sabel MS, Kleer CG. EZH2 and ALDH-1 mark breast epithelium at risk for breast cancer development. *Mod Pathol: An official journal of the United States and Canadian Academy of Pathology, Inc*. 2011;24(6):786-93.
- [34] Zhang Y, Li Y, Lin C, Ding J, Liao G, Tang B. Aberrant upregulation of 14-3-3sigma and EZH2 expression serves as an inferior prognostic biomarker for hepatocellular carcinoma. *PLoS One*. 2014;9(9):e107251.
- [35] Lin YW, Ren LL, Xiong H, Du W, Yu YN, Sun TT, et al. Role of STAT3 and vitamin D receptor in EZH2-mediated invasion of human colorectal cancer. *J Pathol*. 2013;230(3):277-90.

PARTICULARS OF CONTRIBUTORS:

1. Assistant Professor of Haematology and Medical Oncology, Haematology and Oncology Research Center, Tabriz University of Medical Sciences, Tabriz, Iran.
2. Professor of Haematology and Medical Oncology, Haematology and Oncology Research Center, Tabriz University of Medical Sciences, Tabriz, Iran.
3. Assistant Professor of Molecular Epidemiology, Haematology and Oncology Research Center, Tabriz University of Medical Sciences, Tabriz, Iran.
4. Associate Professor of Haematology and Medical Oncology, Haematology and Oncology Research Center, Tabriz University of Medical Sciences, Tabriz.
5. Associate Professor of Haematology and Medical Oncology, Haematology and Oncology Research Center, Tabriz University of Medical Sciences, Tabriz.
6. Assistant Professor of Haematology and Medical Oncology, Haematology and Oncology Research Center, Tabriz University of Medical Sciences, Tabriz, Iran.
7. Professor, Department of Pathology, Haematology and Oncology Research Center, Tabriz University of Medical Sciences, Tabriz, Iran.
8. Midwest Biomedical Research Foundation, Kansas City, Missouri, USA.

NAME, ADDRESS, E-MAIL ID OF THE CORRESPONDING AUTHOR:

Dr. Zohreh Sanaat,
Shahid Ghazi Haematology Ward, Emam Reza Hospital, Daneshgah St, Tabriz, Iran.
E-mail: zohrehsanaat@yahoo.com

AUTHOR DECLARATION:

- Financial or Other Competing Interests: None
- Was Ethics Committee Approval obtained for this study? Yes
- Was informed consent obtained from the subjects involved in the study? Yes
- For any images presented appropriate consent has been obtained from the subjects. Yes

PLAGIARISM CHECKING METHODS: [Jain H et al.]

- Plagiarism X-checker: Nov 06, 2019
- Manual Googling: Jan 24, 2020
- iThenticate Software: Feb 21, 2020 (19%)

ETYMOLOGY: Author Origin

Date of Submission: **Nov 05, 2019**
Date of Peer Review: **Jan 02, 2020**
Date of Acceptance: **Feb 13, 2020**
Date of Publishing: **Mar 01, 2020**